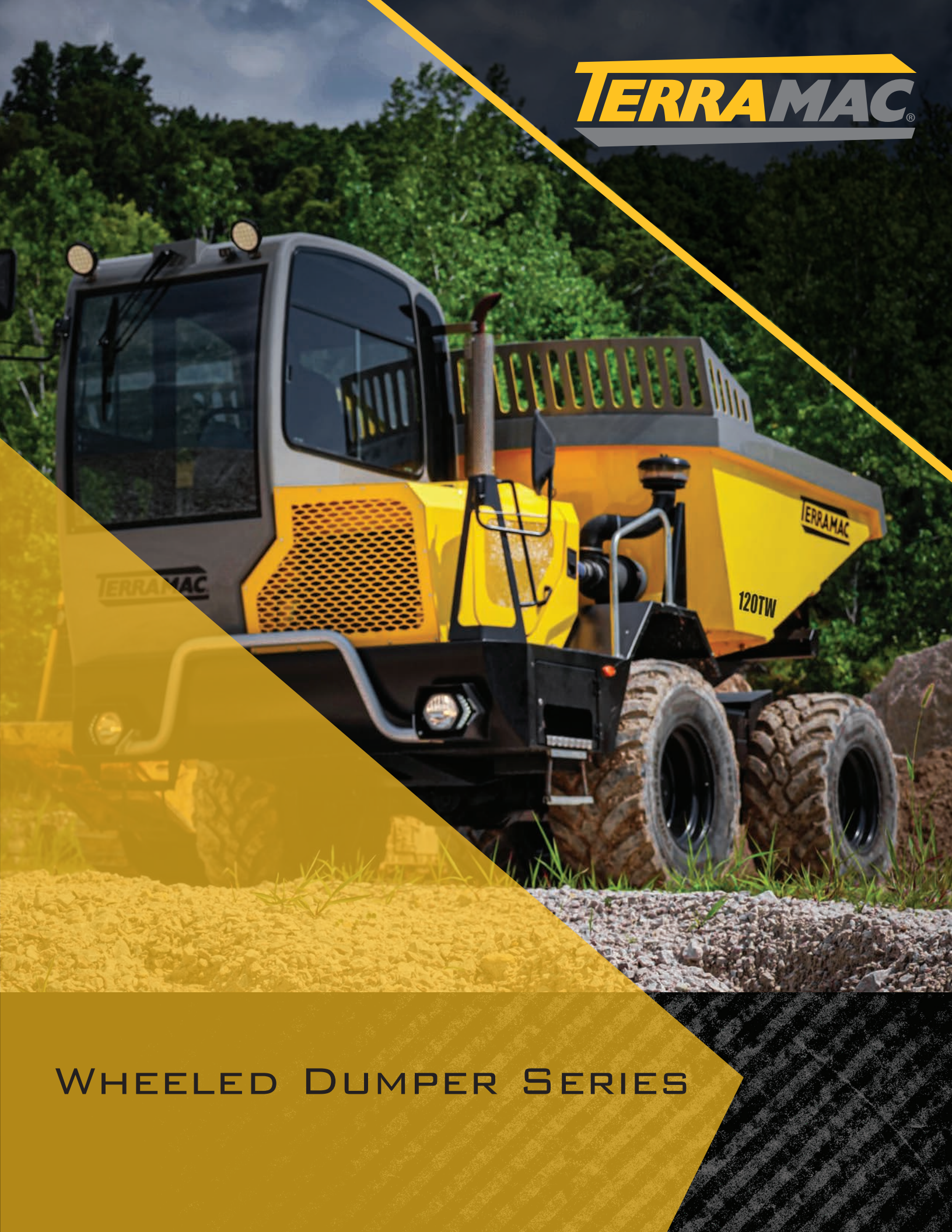


TERRAMAC[®]



WHEELED DUMPER SERIES



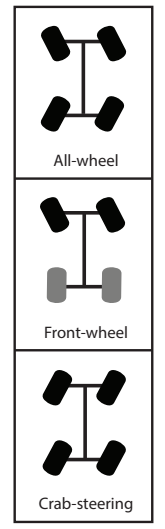
DOMINATE THE DIRT

The Wheeled Dumper Advantage

With a legacy of delivering top-tier equipment across diverse industries, we are excited to expand our product line to include the all-new Wheeled Dumper Series. Designed to deliver higher speeds and ample carrying capacity, these versatile units come in a range of sizes to suit any job.

Whether you're working on construction sites, road projects, or any demanding terrain, our wheeled dumpers are the perfect complement to our trusted tracked units. Explore the new standard in efficiency and performance with our innovative Wheeled Dumper Series.

Select Models Feature
3 Steering Modes



REAR DUMPER

Frame Type: Rigid
Dump Cylinders: Double-action dual cylinders
Electrical System: 12V (900 A)
Cab: ROPS: ISO 3471; FOPS ISO 3449 LEVEL II
Steering: 3 Steering Modes; front only, 4 wheel steer and crab mode.
Transmission: Full time 4x4 4 speed forward and reverse "Two speed mechanical gear box, two Hydraulic gears" [Electrohydraulic Hydrostatic Gearbox's (Turtle & Rabbit mode)] *Optional - Rexroth Smart Shift®
Brakes: Hydraulic service brake on all 4 wheels; parking brake mounted directly on rear axle. Emergency brake incorporated in service brake.
Operator's Station: Rotating turret mounted on a ball-bearing swivel ring. ROPS: ISO 3471; FOPS ISO 3449 LEVEL II. Heat/AC are standard.
Hydraulic System: Hydrostatic Drive Pump 47.3 GPM @ 6962 PSI; 16.5 GPM aux pump @ 2030 PSI; Steering and Brake pump 12.7 GPM @ 500 PSI.
Electric: (1) 12V 50Ah, 1000 CCA AGM
Optional Tires: Ceat, 600/5022.5" (available for D12 and D14 only).



MODEL	D6	D12	D14
Dimensions	15' 3" x 6' 6" x 9' 1"	17' 9" X 7' 9" X 10' 4"	17' 9" x 8' 4" x 10' 6"
Machine Weight	11,240 LBS	13,600 LBS	13,600 LBS
Carrying Capacity	13,230 LBS	26,455 LBS	30,865 LBS
Total Weight – GVWR	24,470 LBS	40,055 LBS	44,465 LBS
Bed Volume (SAE Heaped)	8.0 YDS	10.8 YDS	10.9 YDS
Dump Angle	70°	70°	70°
Gradability	50% Grade	40% Grade	40% Grade
Engine	Yanmar Stage V/T4F 72 HP	Perkins 904J-E36TA Stage V/T4F 121 HP	Perkins 904J-E36TA Stage V/T4F 121 HP
Top Speed	24.9 MPH	21.7 MPH	21.7 MPH
Front Axle	10° Oscillating	8° Oscillating; 80 locking differential (Only works when BOTH axles are aligned)	8° Oscillating; 80 locking differential (Only works when BOTH axles are aligned)
Back Axle	Fixed; fully locking differential	Fixed; fully locking differential	Fixed; fully locking differential
Turning Radius	14' 9"	16' 11"	16' 11"
Approach Angle	31°	26°	35°
Ground Clearance	11.8"	1' 5"	1' 5"
Standard Tire Size (Trelleborg)	12.5/8018" 16PR	500/60R22.5"	500/60R22.5"
Fuel Tank Size	33 GAL	46.2 GAL	46.2 GAL
Hydraulic Tank Size	33 GAL	46.2 GAL	46.2 GAL

Warranty

With a commitment to excellence, our 2-year/1,000-hour full machine warranty ensures you're covered.

Telematics

Each machine is equipped with a Trackunit telematics system to provide valuable insights on productivity and maintenance.

The Terramac Promise

The Wheeled Dumper Series carries the same excellent product and customer support you've come to rely on with Terramac products.

Back the Track





MULTI-VIEW SWIVEL DUMPER

MODEL	3V70	120TW
Dimensions	16' 4" x 6' 2" x 9' 9"	17' 6" x 8' 4" x 10' 6"
Machine Weight	9,240 LBS	17,550 LBS
Carrying Capacity	15,400 LBS	26,455 LBS
Total Weight – GVWR	24,640 LBS	44,005 LBS
Bed Volume (SAE Heaped)	4.4 YDS	7.9 YDS
Dump Angle	70°	78°
Gradability	35% Grade	40% Grade
Engine	Perkins 404J-E22TA Stage V/T4F 73.7 HP	Perkins 904J-E36TA Stage V/T4F 121 HP
Top Speed	18.6 MPH	21.7 MPH
Front Axle	Fixed, rigid axle planetary reduction at hubs	8° Oscillating
Back Axle	Fixed, rigid axle planetary reduction at hubs	Fixed; fully locking differential
Turning Radius	18' 4"	16' 11"
Approach Angle	29°	35°
Ground Clearance	1' 2"	1' 3"
Standard Tire Size	400/70R18" (Alliance Standard)	500/60R22.5" (Trelleborg)
Fuel Tank Size	15.8 GAL	46.2 GAL
Hydraulic Tank Size	15.3 GAL	46.2 GAL

Frame Type: Articulated (3V70); Rigid (120TW)

Bed Slewing Angle: 180°

Steering: Articulated (3V70); 3 Steering Modes (120TW)

Transmission: Full-time 4x4; 2 Speeds Forward/Reverse; Electro-Hydraulic Hydrostatic

Brakes: Oil immersed, Multidisc, Hydraulically Operated

Operator's Station: Rotating turret mounted on a ball-bearing swivel ring. ROPS: ISO 3471; FOPS ISO 3449 LEVEL II. Heat/AC is standard.

Electric: (1) 12V 50Ah, 1000 CCA AGM

Hydraulic System: Double Gear Pump

Optional Tire Size: For unit 120TW, Ceat, 600/5022.5" tires available.

Frame Type: Articulated

Bed Slewing Angle: 180°

Steering: Articulated

Transmission: Full-time 4x4; 2 Speeds Forward/Reverse; Electro-Hydraulic Hydrostatic

Brakes: Oil Immersed, Multidisc, Hydraulically Operated

Operator's Station: Foldable ROPS Arch, Vandal Resistant System

Electric: (1) 12V 50Ah, 1000 CCA AGM

Hydraulic System: Double Gear Pump



SWIVEL DUMPER

MODEL	DS70
Dimensions	14' 0" x 6' 2" x 9' 1"
Machine Weight	7,700 LBS
Carrying Capacity	15,432 LBS
Total Weight – GVWR	23,100 LBS
Bed Volume (SAE Heaped)	4.7 YDS
Dump Angle	70°
Gradability	40% Grade
Engine	Yanmar Turbo Diesel Stage V/T4F 72 HP
Top Speed	17.4 MPH
Front Axle	Fixed, rigid axle planetary reduction at hubs
Back Axle	Fixed, rigid axle planetary reduction at hubs
Turning Radius	15' 1"
Approach Angle	35°
Ground Clearance	13' 5"
Standard Tire Size	400/70R18" (Alliance Standard)
Fuel Tank Size	20.6 GAL
Hydraulic Tank Size	15.3 GAL

TERRAMAC®

TERRAMAC.COM

630-365-4800

TMWDF082024