

PURPOSE BUILT UTILITY CARRIERS



Go Anywhere, Do Anything

Terramac all-terrain utility vehicles are easily maneuvered over rough, soft, wet and steep ground conditions. Units are built with front and rear frame extensions and offer various hydraulic pump drive configurations allowing support equipment to be installed with ease. Terramac models provide peace of mind when it comes to: **Safety** (ROPS & FOPS cabs, rear camera, digital inclinometer, ISO controls), **Comfort** and **Maintenance** (all fluids can be checked from ground level).

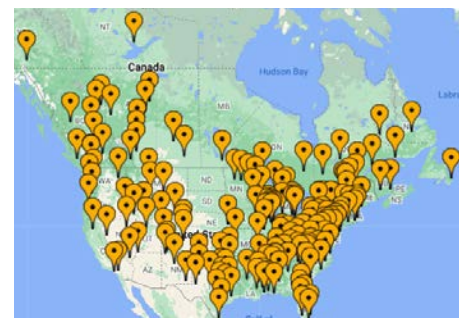
Low Ground Pressure

When problematic terrain prohibits wheeled vehicles from reaching remote jobsites, keep your crews working with rubber tracked crawler carriers. Terramac carriers exert low ground pressure, ranging from 5.3 - 8.3-psi for conquering steep slopes with ease. Enjoy improved productivity during multiple phases of the project including site investigation, installation, repairs and restoration.

Dealer Network - Local & Responsive

Terramac is proud to provide a full-line dealer network which is the largest carrier sales, rentals, parts and service network in North America. Preventative Maintenance and Extended Warranty programs are available.

To find a dealer near you visit <https://terramac.com/sales-rentals>



UTILITY CARRIER SPECIFICATIONS

Rubber Tracked Purpose Built Carriers

Terramac rubber tracked carriers allow crews to work safely and efficiently to install, restore or repair powerline services in remote areas. The sky is the limit when it comes to configuring your ideal utility crawler carrier. All Terramac utility models include front and rear frame extensions and various hydraulic pump

drive configurations which allow a variety of aerial equipment, digger derricks, winches and more. We offer custom paint colors allowing brand unity across your entire fleet.

To learn more, contact us at 630.365.4800.



MODEL NAME	RT7U	RT9U	RT14U
Overall Dimensions*	20' 3" L x 8' 2" W x 9' 6" H	24' L x 8' 3" W x 9' 11" H	24' L x 10' W x 10' 5" H
Rail Width	3' W (1/2" thick wall)	3.3' W	3.7' W
Rear of Cab to Rear of Rail**	11.5' L	13.9' L	14.1' L
Front Rail Extension**	3.1' W	3.9' W	3.6' W
Base Weight	16,924 lbs	20,668 lbs	27,000 lbs
Maximum Carrying Capacity	16,576 lbs ¹	23,512 lbs	35,260 lbs
GVWR	33,500 lbs ¹	44,180 lbs	62,260 lbs
Ground Pressure at Max Weight	5.8 PSI	6.4 PSI	7.4 PSI
Ground Pressure - Unloaded	2.9 PSI	3.0 PSI	3.2 PSI
Engine	155 HP @ 2200 RPM Cummins B4.5 US T4F / EU Stage 5	225 HP @ 2200 RPM Cummins 6.7 T4F	310 HP @ 2200 RPM Cummins QSB 6.7 T4F
Travel Speed - 1st Gear	3.3 mph	2.5 mph	4.0 mph
Travel Speed - 2nd Gear	6.7 mph	5.4 mph	6.8 mph
Gradability***	58% (30°)	58% (30°)	58% (30°)
Fuel Capacity	40 gal	64 gal	82 gal

* The overall length may vary depending on utility build model selected. Heights listed above are full height with travel beacon in the up position. Transportation height with beacon in the down position are RT7U: 9' 3", RT9U: 9' 8" and RT14U: 10' 2".

** Frame length can be modified, please contact Terramac for details.

*** Gradability may vary based on support equipment added to the carrier, please contact Terramac for details.

¹ GVWR up to 38,000 lbs with application approval by Terramac.



UTILITY CARRIER CUSTOMIZATIONS

Support Equipment Options

At Terramac, we pride ourselves on delivering safe equipment solutions that fit your needs. Our dedicated engineering and service teams have installed many different configurations onto Terramac crawler carriers and stand ready to make sure the equipment you need works seamlessly on ours regardless of whether it's installed at the factory or as an aftermarket retrofit.

If you're not in the market for new support equipment you can take advantage of upgrading your current fleet by re-mounting your existing truck-mounted equipment onto a carrier.

All OEM brands are compatible with Terramac models and our machines deliver ready for the installer.

TERRAMAC CARRIERS WITH AERIAL DEVICES					
Crawler	Model	Working Height	Outrigger	Jib Capacity	Bucket
Terramac RT7U	Terex TCX50/Versalift VO250	55 ft.	Front & Rear Radial	2000 lbs.	1 or 2 Man
Terramac RT7U	Terex TCX55/ Versalift VO255	60 ft.	Front & Rear Radial	2000 lbs.	1 or 2 Man
Terramac RT7U	Terex TCX60/ Versalift VO260	65 ft.	Front & Rear Radial	2000 lbs.	1 or 2 Man
Terramac RT7U	Versalift VST-7100-MHI	75 ft.	Front & Rear Radial	2000 lbs.	1 or 2 Man
Terramac RT7U	Versalift VST-7500	80 ft.	Front & Rear Radial	2000 lbs.	1 or 2 Man
Terramac RT9U	Terex RMX75	80 ft.	Front & Rear Radial	2000 lbs.	1 or 2 Man
Terramac RT9U	Versalift VST-8500/9000/9500	90 ft. - 100 ft.	Front & Rear Radial	1000 lbs.	1 or 2 Man
Terramac RT14U	Terex TM85	87 ft. - 89 ft.	Front & Rear Radial	1500 lbs.	1 or 2 Man
Terramac RT14U	Terex TM100	100 ft.	Front & Rear Radial	1500 lbs.	1 or 2 Man

TERRAMAC CARRIERS WITH DIGGER DERRICKS					
Crawler	Model	Sheave Height	Outrigger	Auger	Upper Controls
Terramac RT7U	Terex C4042/ Versalift TMD 2042	42 ft.	Front & Rear Radial	18" - 24"	Optional
Terramac RT7U	Terex C4045/ Versalift TMD-2045	45 ft.	Front & Rear Radial	18" - 24"	Optional
Terramac RT7U	Terex C4047/ Versalift TMD-2047	47 ft.	Front & Rear Radial	18" - 24"	Optional
Terramac RT7U	Terex C4050/ Versalift TMD-2050	50 ft.	Front & Rear Radial	18" - 24"	Optional
Terramac RT9U	Terex C6060/ Versalift TMD 4060	60 ft.	Front & Rear Radial	24" - 36"	Optional
Terramac RT14U	Terex General 65, 80, 95	65 ft. - 95 ft.	Front & Rear Radial	24" - 36"	NA

Proper load weight and distribution are critical to stability and safety. Modifications should be discussed with Terramac to ensure proper mounting and installation.

UTILITY CARRIER CUSTOMIZATIONS



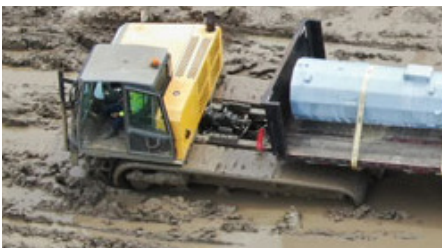
Digger Derricks



Aerial Devices



Lineman Winches



Fifth Wheel



Service Crane



Vacuum Excavator



Concrete Agitator



Concrete Chute



Fuel Tank



Concrete Mixer



Personnel Carrier



Hydroseeding